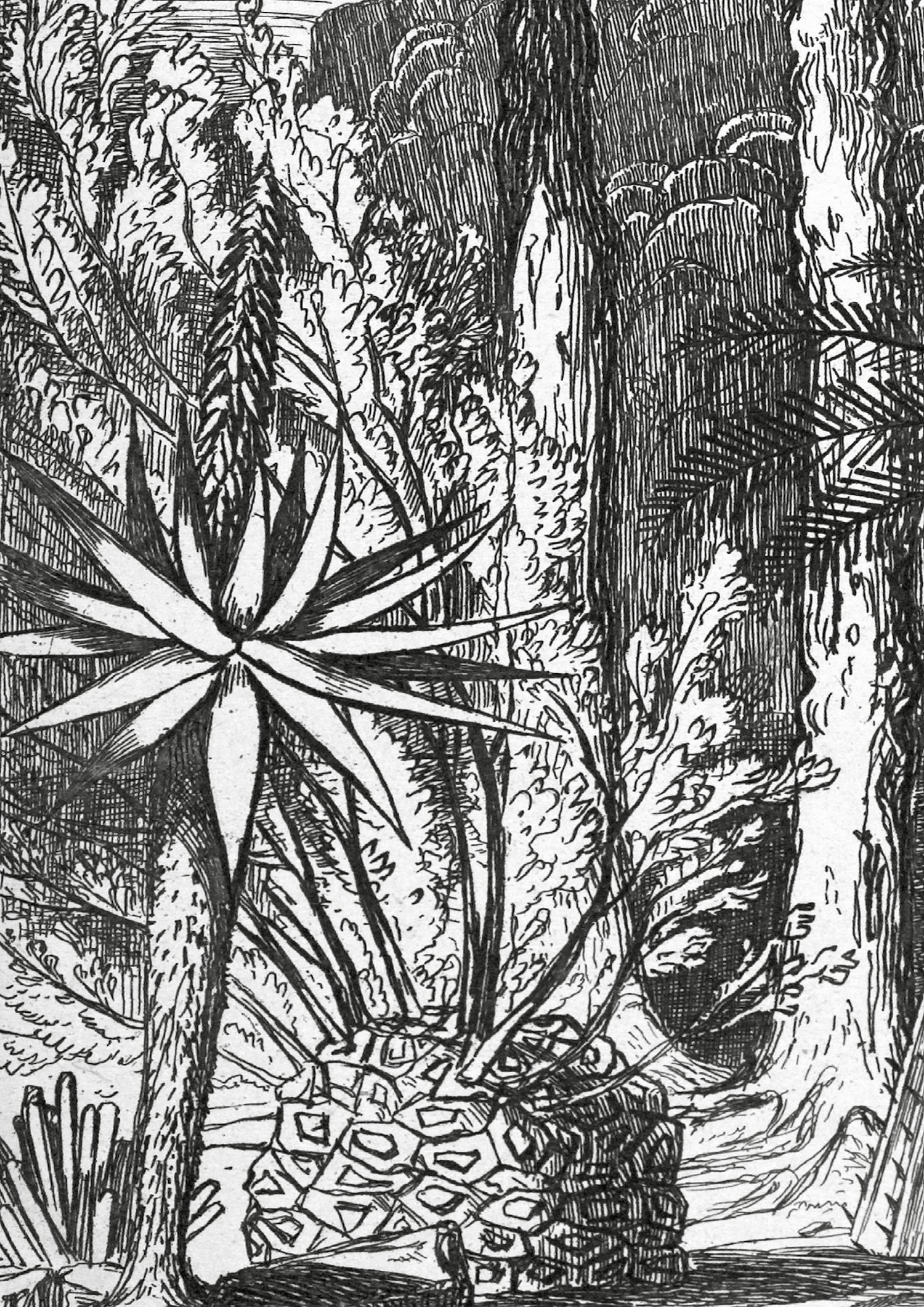



**evolution**  
**PRODUCT**





Amanda du Plessis, directrice artistique et fondatrice d'Evolution Product, se nourrit d'histoires nostalgiques du patrimoine de son pays, l'Afrique du Sud, pour donner vie à ses collections textiles en lin brut pour la maison.

*«Nous aimons perpétuer l'héritage du passé de on pays, le cultiver au coeur de nos produits de décoration d'intérieur, et le partager telle une simple conversation avec nos clients, célébrant ainsi notre rapport unique avec la nature et le temps.»*

Telle une alchimiste d'intérieur, Amanda marie des sources narratives inspirées de lithographies, d'esquisses, d'herbiers et de gravures du XVIIIème et XIXème siècles, jouant avec des techniques de reproduction étonnantes, des pigments et matières naturels, pour des effets singuliers et des broderies raffinées. Elle rappelle également à travers ses collections majoritairement inspirées par la nature combien notre planète est fragile et que notre devoir est de la protéger.

Evolution Product collabore dans le monde avec des professionnels, magasins avec show-rooms, architectes et décorateurs d'intérieur qui adhèrent à sa philosophie de création, sa production durable et qui sauront sublimer son héritage d'Afrique du sud dans les plus belles scénographies et installations.

# **RELATIONS PRESSE & COMMERCIALES**

## **PRESS & SALES RELATIONS**


**VKB  
PR.**

Virginie Kadzielawa-Boumso  
virginie@vkbpr4home.com  
+33(0)670012984

[www.vkbpr.com](http://www.vkbpr.com)



@vkbpr



Website

[www.evolutionproduct.co.za](http://www.evolutionproduct.co.za)

Email

[info@evolutionproduct.co.za](mailto:info@evolutionproduct.co.za)

Phone

+27 (0) 10 900 0631

Instagram

[evolution\\_product](https://www.instagram.com/evolution_product)

Facebook

[@EvolutionProductSA](https://www.facebook.com/EvolutionProductSA)

## RANGES & PRODUCTS

02 - 04	<i>Purchasing &amp; Product Information</i>
05 - 12	<i>Daybreak</i>
13 - 20	<i>Nymphyaea</i>
21 - 28	<i>Protectors of the Planet</i>
29 - 32	<i>William's View</i>
33 - 40	<i>Commemorated Lithographs</i>
41 - 46	<i>Blagrave's Ferns</i>
47 - 54	<i>Varied Origins</i>
55 - 58	<i>Cape Collection</i>
59 - 66	<i>The Magic Veld</i>
67 - 70	<i>Field Notes &amp; Veld Finds</i>
71 - 76	<i>Swerving Savannahs</i>
77 - 80	<i>Throws</i>
81 - 82	<i>Guest Towels</i>
83 - 84	<i>Carpets</i>



## HOW TO ORDER

If you are interested in placing an order, please send us an email at [info@evolutionproduct](mailto:info@evolutionproduct) and we will send you pricelists for the ranges you are interested in. Alternatively, anyone can order directly from our South African website at [www.evolutionproduct.co.za](http://www.evolutionproduct.co.za)

We ship worldwide.

## SIZING

Standard cushion sizes and inners:

### *Metric*

60 cm x 40 cm cushion cover - 65 cm x 45 cm inner  
72 cm x 44 cm cushion cover - 75 cm x 45 cm inner  
85 cm x 46 cm cushion cover - 90 cm x 50 cm inner  
90 cm x 60 cm cushion cover - 95 cm x 65 cm inner  
47 cm x 47 cm cushion cover - 50 cm x 50 cm inner  
60 cm x 60 cm cushion cover - 65 cm x 65 cm inner  
70 cm x 70 cm cushion cover - 75 cm x 75 cm inner

### *Imperial*

23.6" x 15.7" cushion cover - 25.5" x 17.7" inner  
28.3" x 17.3" cushion cover - 29.5" x 17.7" inner  
33.4" x 18.1" cushion cover - 35.4" x 19.7" inner  
35.4" x 23.6" cushion cover - 37.4" x 25.6" inner  
18.5" x 18.5" cushion cover - 19.7" x 19.7" inner  
23.6" x 23.6" cushion cover - 25.6" x 25.6" inner  
27.6" x 27.6" cushion cover - 29.5" x 29.5" inner

We recommend using feather/down inners to increase the longevity of the cushion covers. Synthetic inners reduce the life span of the linen fibres as a result of the static energy build up.

## EMBROIDERED VS PRINTED CUSHIONS

If 'EMB' or 'embroidery' is specified in the name of an item, it means that a design has been embroidered on to the linen. These items can be dyed in the colours specified on the next- page.

If 'print' is included in the name of the product or if 'embroidery' has not been stated in the title, the visual has been digitally printed on to the linen.





ACID YELLOW



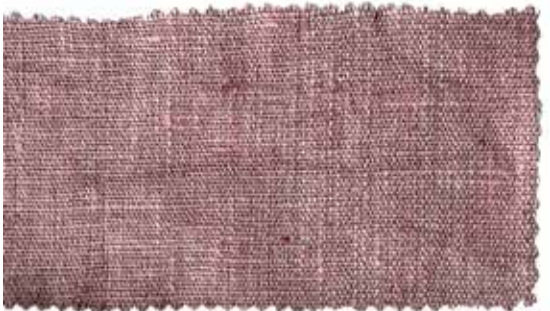
OCHRE



ANTIQUÉ RUST



RUST



DIRTY PINK

MOCHA



PLUM



GREEN



INDIGO



CHARCOAL





## Daybreak

These past two years have made us relook and rethink how we work, how we live and what we see as valuable. A much-needed AWAKENING.

“Daybreak,” he said, looking out at it. “I always thought it was funny that dawn should be called daybreak. This is when the day is made – it’s the beginning. It’s the best part: you’ve got all the potential of the day to come, and you haven’t wasted yet. When it gets dark, that should be daybreak.”

— Erin Kelly, *The Poison Tree*

To new beginnings and as a reflection on all the breaks we have had over the past 10 years of creating Evolution Product.

Our inspiration came from the colours created in the early morning light – as Martin Luther said, God writes the gospel not in the Bible alone, “but on trees and flowers and clouds and stars”.

We combined our love for the historical landscapes, botanicals and African textile designs we have found into our Daybreak assortment and added some new designs.

May your Daybreaks be filled with new adventures and time to reset.



HAEAMANTHUS MAG-  
NIFICUS

60: 60cm x 60cm

60: 23.6" x 23.6"



MEMBRANACEAUS

60: 60cm x 60cm

60: 23.6" x 23.6"

HAEAMANTHUS GYAXIS

72cm x 44cm

28.3" x 17.32"



SCASOXUS PUNICEUS

72cm x 44cm

28.3" x 17.32"



CYPHOSTEMMA JUTAE

72cm x 44cm

28.3" x 17.32"



## JUTTAE EMBROIDERY

72cm x 44cm

28.3" x 17.32"

Available in all our dye colours.



## SCADOXUS EMBROIDERY

72cm x 44cm

28.3" x 17.32"

Available in all our dye colours.



## JACQUARD CUSHION

60: 60cm x 60cm

60: 23.6" x 23.6"

Available in all our dye colours.



## WAFFLE WEAVE CUSHION RECTANGLE

72cm x 44cm

28.3" x 17.32"

Available in all our dye colours.



## WAFFLE WEAVE CUSHION SQUARE

70: 70cm x 70cm

70: 27.6" x 27.6"

Available in all our dye colours.







HAEAMANTHUS KATHARINA PANEL

220cm x 150cm  
86.6" x 59"



CISSUS JUTTAE PANEL

220cm x 150cm  
86.6" x 59"



MONKEY BAY PANEL

220cm x 150cm  
86.6" x 59"



## Nymphaea

In Greek Mythology, Nymphaea, water lilies, are seen as a feminine spirit that inhabits fresh water.

Over time, different cultures have formed their own unique beliefs about the Nymphaea species. Egyptians believe they create unity and symbolise the circle of life. In Asia the plant represents universality, in Buddhism enlightenment and in Hinduism they are seen as a symbol of purity. Lilies grow in mud but creates a pure flower without blemishes.

We realised that their fresh water habitats are threatened. Fresh water is becoming more limited year after year, with reserves now standing on about 1%. We need to stand together to become more conscientious on how we use one of our most valuable resources.

The dried and pressed Nymphaea specimens used in our range come from South African research herbariums who conduct research in keeping our natural resources sustainable.

The colours of the preserved Nymphaea specimens changed over the years. As they changed we should change in the way we use water, one of our scarcest resources.



MOPIPI LILAC

72cm x 44cm

28.3" x 17.32"



THAMALAKANE PLUM

72cm x 44cm

28.3" x 17.32"



THAMALAKANE GREEN

72cm x 44cm

28.3" x 17.32"

MOPIPI GREEN

60: 60cm x 60cm

60: 23.6" x 23.6"



THAMALAKANE RUST

60: 60cm x 60cm

60: 23.6" x 23.6"



GRAVELOTTE

60: 60cm x 60cm

60: 23.6" x 23.6"





## GOBEGO EMBROIDERY

60: 60cm x 60cm

60: 23.6" x 23.6"



## MOIPI EMBROIDERY

60: 60cm x 60cm

60: 23.6" x 23.6"

Available in all our dye colours.



### SAMBANDOU EMBROIDERY

72cm x 44cm

28.3" x 17.32"

Available in all our dye colours.

### LUMI EMBROIDERY

72cm x 44cm

28.3" x 17.32"

Available in all our dye colours.



### OKAVANGO EMBROIDERY

LA: 90cm x 60cm

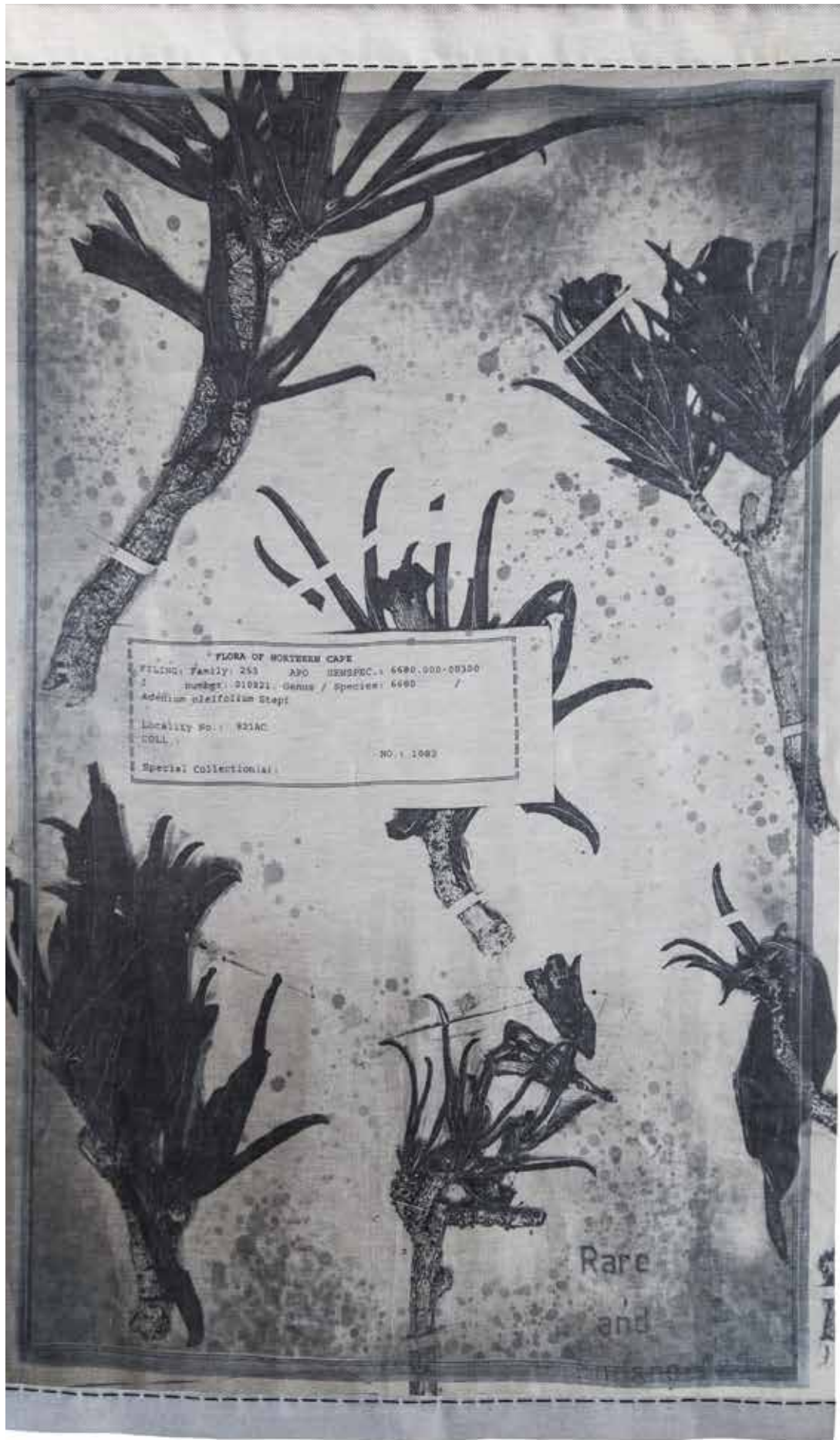
LA: 35.4" x 23.6"





KAFUE PANEL

220cm x 150cm  
86.6" x 59"



PROTEA PANEL

220cm x 150cm  
86.6" x 59"



## Protectors of the Planet

It is called the Blue planet effect. David Attenborough presented the effect of plastic in his last episode of Blue Planet 2, the impact of these visuals made us seriously think about our way forward.

We wanted to create a range that honours the species that works day and night to create 70% of the oxygen for our blue planet.

We have been fascinated by our botanical history and honoured the pioneers who captured the beauty in sketch and paint. In this range, we would like to honour people like David Attenborough, who all tirelessly focuses on the plight of our oceans and locally on Dr Kerry Sink, who spend their lives doing research and communicating the plight of our natural habitats and especially the oceans.

The South African BioDiversity Institute (SANBI) assisted us in our search for a new range. They discovered a rare book of historic pressed Sea Algae from our oceans by William Tyson dating back to 1908. They were very generous to share this discovery with us. We were astounded at the beauty of these Sea Warriors and translated their beauty into our new range-Protectors of our Planet.



NITIPHYLLUM GREEN

72cm x 44cm

28.3" x 17.32"



CALLYMENIA

72cm x 44cm

28.3" x 17.32"



NEMASTOMA

72cm x 44cm

28.3" x 17.32"

RADIATA

60: 60cm x 60cm

60: 23.6" x 23.6"



VENOSUM

60: 60cm x 60cm

60: 23.6" x 23.6"



SUHRI

60: 60cm x 60cm

60: 23.6" x 23.6"





CALLYMENIA EMBROIDERY

72cm x 44cm

28.3" x 17.32"



LEAF EMBROIDERY

LA: 90cm x 60cm

LA: 35.4" x 23.6"

Available in all our dye colours



CRYPTONEMIA EMBROIDERY

60: 60cm x 60cm

60: 23.6" x 23.6"



NITIPHYLLUM EMBROIDERY

LA: 90cm x 60cm

LA: 35.4" x 23.6"

Available in all our dye colours





NITIPHYLLUM PANEL

220cm x 150cm  
86.6" x 59"



NEMASTOMA PANEL

220cm x 150cm  
86.6" x 59"



## William's View

“A plant needs to do more than stretch its leaves toward the sun. It also needs to send down roots deep into the ground. They hold on tightly in the dark, out of sight where it is easy to forget about them. But it is the fact that a plant can do these two things at once, anchoring itself to the earth even as it reaches for the sky, that makes it strong.”-Cameron Dokey

We love how plants evolve... We love the details and the way they change. When we started with our sun print ranges we noticed how fast the changes happened. We wanted to see what happens on the inside of these plants, we wanted to see what happens in the dark, how they are structured, how the unseen is created. This led to us to explore X-ray photography.

Willem Conrad Roentgen discovered X-rays in 1895 while being a professor at Würzburg University in Germany. Some of the first floral X-ray images we could find was done by an artist and a physiologist in 1896.

The process of X-ray photography did not get much further attention until the 1930's with the work of Hazel Engelbrecht and Dain Tasker. Engelbrecht's work sprang from scientific research of botanical specimens, whereas Tasker was interested in artistic presentation.



WILL'S TEAL GARDEN

60: 60cm x 60cm

60: 23.6" x 23.6"



WILL'S CORAL

60: 60cm x 60cm

60: 23.6" x 23.6"



WILL'S GARDEN

60: 60cm x 60cm

60: 23.6" x 23.6"

WILL'S MOSS

60: 60cm x 60cm

60: 23.6" x 23.6"



WILL'S HYDRANGEA

60: 60cm x 60cm

60: 23.6" x 23.6"





## Commemorated Lithographs

In this new range of designs, which originated from evocative lithograph stamps found in the archives of SANBI, we celebrate the historic print process invented by Bavarian author Aloys Senefelder in 1796.

The visuals we discovered were used in the early 1930's by the iconic farming magazine, Landbou Weekblad from South Africa. Until today this magazine provides farmers in our country with valuable information regarding agricultural practices.

These metal plated wooden blocks were donated to the museum in the late 1950's. After the discovery of these valued pieces of history, photographs were taken by our team and enhanced to reveal moss and winter leaf colours.

The visuals are grainy and evocative.  
The effect is mysterious and magical.





ALOE HILL

72cm x 44cm

28.3" x 17.32"

AUTUMN LEAF

72cm x 44cm

28.3" x 17.32"



MIELIELAND

72cm x 44cm

28.3" x 17.32"

DROE BLAAR

72cm x 44cm

28.3" x 17.32"





GROEN BOOM

60: 60cm x 60cm

60: 23.6" x 23.6"



BLAARTJIE

60: 60cm x 60cm

60: 23.6" x 23.6"



PROTEA BOS

60: 60cm x 60cm

60: 23.6" x 23.6"



STAPELIA

60: 60cm x 60cm

60: 23.6" x 23.6"

CONFORMIS EMBROIDERY

60: 60cm x 60cm

60: 23.6" x 23.6"

Available in all our dye colours



OPHIO EMBROIDERY

72cm x 44cm

28.3" x 17.32"

Available in all our dye colours





PROTEA BOS  
EMBROIDERY

72cm x 44cm

28.3" x 17.32"

Available in all our dye  
colours



KLOOF PANEL

220cm x 150cm  
86.6" x 59"



EUPHORBIA TREE PANEL

220cm x 150cm  
86.6" x 59"



## Blagrave's Ferns

The Evolution team discovered an inspirational collection of evocative photograms while researching the history of South Africa's botanical art.

Thomas C. Blagrave, a retired lieutenant colonel from England, in 1860 created this comprehensive study of ferns in South Africa and recorded his findings in a unique format. We fell in love with the textures of the photographic paper and the iridescent effect of the film while the fern patterns were kept stark, clean and true to their natural state.

Blagrave writes in the preface of the book: "The illustrations are photo prints made by myself at Wynberg, during the months of May, June and July, 1860, from fresh and dried specimens either of my own or Dr. Pappe's herbarium".





FERN 1

60: 60cm x 60cm

60: 23.6" x 23.6"



FERN 3

60: 60cm x 60cm

60: 23.6" x 23.6"



FERN 4

60: 60cm x 60cm

60: 23.6" x 23.6"

FERN 5

60: 60cm x 60cm

60: 23.6" x 23.6"



FERN 7

72cm x 44cm

28.3" x 17.32"



FERN 8

72cm x 44cm

28.3" x 17.32"





### FERN 1 EMBROIDERY

72cm x 44cm

28.3" x 17.32"

Available in all our dye colours.



### FERN 2 EMBROIDERY

72cm x 44cm

28.3" x 17.32"

Available in all our dye colours.



### FERN 3 EMBROIDERY

72cm x 44cm

28.3" x 17.32"

Available in all our dye colours.

FERN 2 PANEL

220cm x 150cm  
86.6" x 59"



FERN 8 PANEL

220cm x 150cm  
86.6" x 59"





## Varied Origins

“The diversity of cultures and heritage in our world is an irreplaceable source of spiritual and intellectual richness for all human kind. The protection and enhancement of cultural and heritage diversity in our world should be actively promoted as an essential aspect of human development.” - UNESCO.

Embracing Unesco’s quote we draw inspiration from Varied Origins for our lodge specific textile assortment. Using ancient patterns from African creators to modern day alchemists who experiment with plants to create colour and patterns on cloth. Truly original and embracing our continents.

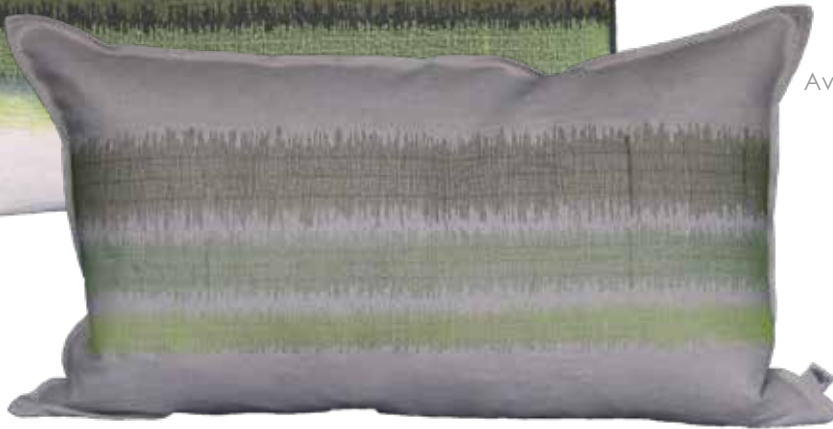


VARIEGATED STRIPE  
EMBROIDERY  
GREEN

72cm x 44cm

28.3" x 17.32"

Available in all our dye colours.



VARIEGATED STRIPE  
EMBROIDERY  
RUST

72cm x 44cm

28.3" x 17.32"

Available in all our dye colours.



VARIEGATED STRIPE  
EMBROIDERY  
PFD

72cm x 44cm

28.3" x 17.32"

Available in all our dye colours.

STRIPE EMBROIDERY  
STONE

72cm x 44cm

28.3" x 17.32"

Available in all our dye colours.



STRIPE EMBROIDERY  
CHARCOAL

72cm x 44cm

28.3" x 17.32"

Available in all our dye colours.







DRY BRANCH  
EMBROIDERY

72cm x 44cm

28.3" x 17.32"

Available in all our dye colours.



TRIBE

72cm x 44cm

28.3" x 17.32"



LADIES WITH BRANCHES

72cm x 44cm

28.3" x 17.32"

TLOKWA EMBROIDERY  
B&W

72cm x 44cm

28.3" x 17.32"

Available in all our dye colours.



TLOKWA EMBROIDERY  
STONE

72cm x 44cm

28.3" x 17.32"

Available in all our dye colours.



MR B EMBROIDERY  
STONE ON STONE

72cm x 44cm

28.3" x 17.32"

Available in all our dye colours.



MR B EMBROIDERY  
CHARCOAL ON STONE

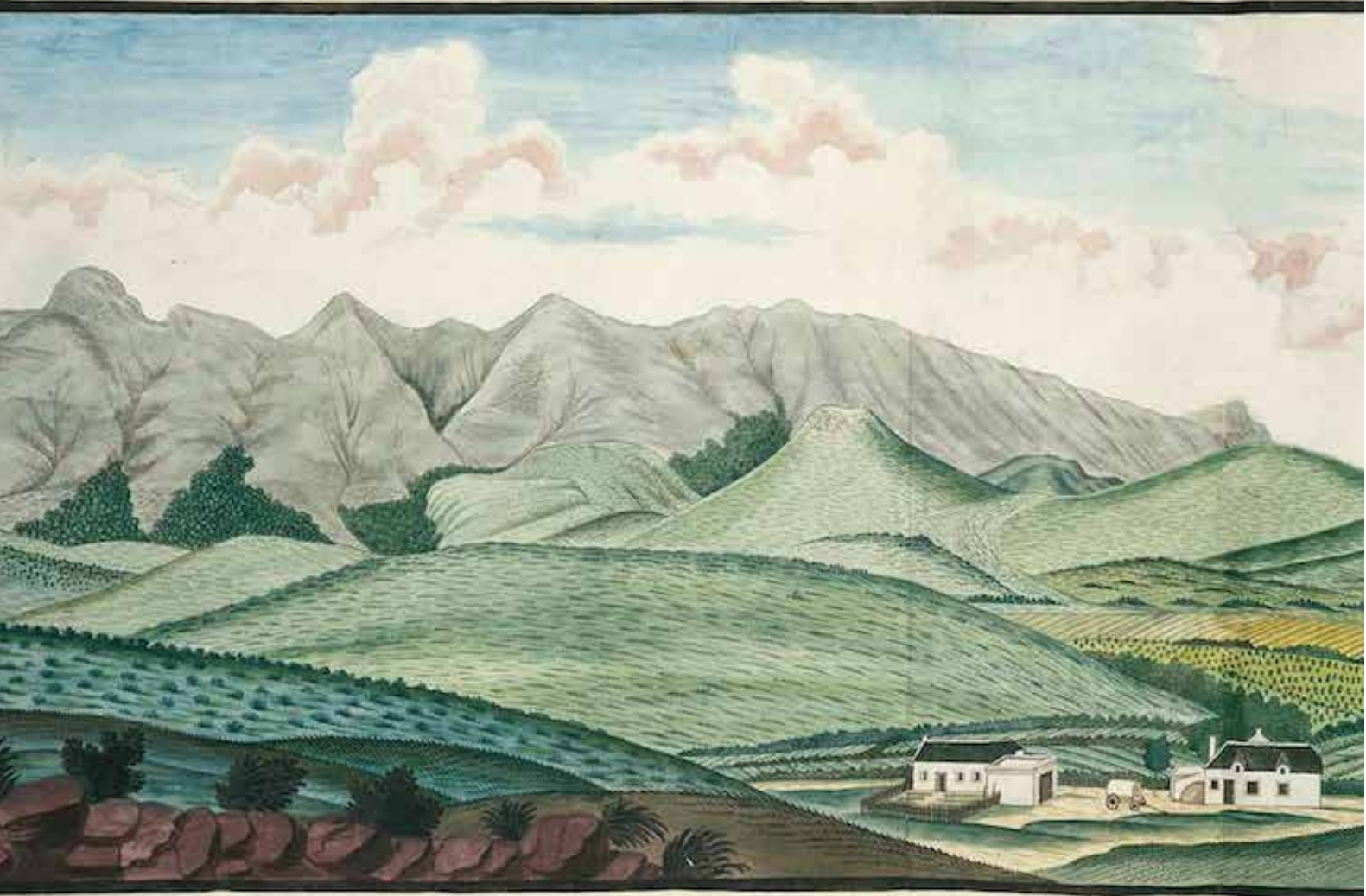
72cm x 44cm

28.3" x 17.32"

Available in all our dye colours.







## Cape Collection

11 Aug 1743- 1808 Brandes was a Dutch artist, taxidermist and missionary. He arrived in Cape Town in 1787 on his way back from a mission in Batavia. He has been praised by the Rijksmuseum for his extraordinary watercolours found in two sketchbooks which were left to them after his death in 1808.



COMPAGNIESPOST

72cm x 44cm

28.3" x 17.32"



NOORDHOEK

72cm x 44cm

28.3" x 17.32"



PLAATS

72cm x 44cm

28.3" x 17.32"

CAPE WINELANDS

72cm x 44cm

28.3" x 17.32"



PAARL

72cm x 44cm

28.3" x 17.32"



TABLE MOUNTAIN

72cm x 44cm

28.3" x 17.32"



LION'S HEAD

72cm x 44cm

28.3" x 17.32"







## The Magic Veld

- The Magic Veld Circa 1600- 1800-

It was their passion for knowledge and a desire to explore the uncharted spaces that lead the early explorers to the Cape on adventures into the hinterlands of Southern Africa. They came not to conquer but to meticulously record the plants, trees and animals they encountered on their perilous journeys into the veld. Many of them were devoted to sketching in scientific detail the things they discovered here and it is from their amazing work that we drew inspiration for our new line The Magic Veld. Our designs were inspired by the explorers as a collective, but also by the stories of some of the most outstanding of these intrepid travellers. It is through their eyes that we get a glimpse of what Southern Africa looked like several centuries ago.

“To view the admirable perfection of nature in a new light, and not less beautiful in the wilds of Africa was the irresistible motive which led me on.”- 18th Century explorer William Burchell, Travels in the interior of Southern Africa.



MELON EUPHORBIA  
EMBROIDERY

60: 60cm x 60cm

60: 23.6" x 23.6"

Available in all our dye colours.



HIPPO

72cm x 44cm

28.3" x 17.32"

CATERPILLAR EUPHORBIA  
EMBROIDERY

60: 60cm x 60cm

60: 23.6" x 23.6"

Available in all our dye colours.



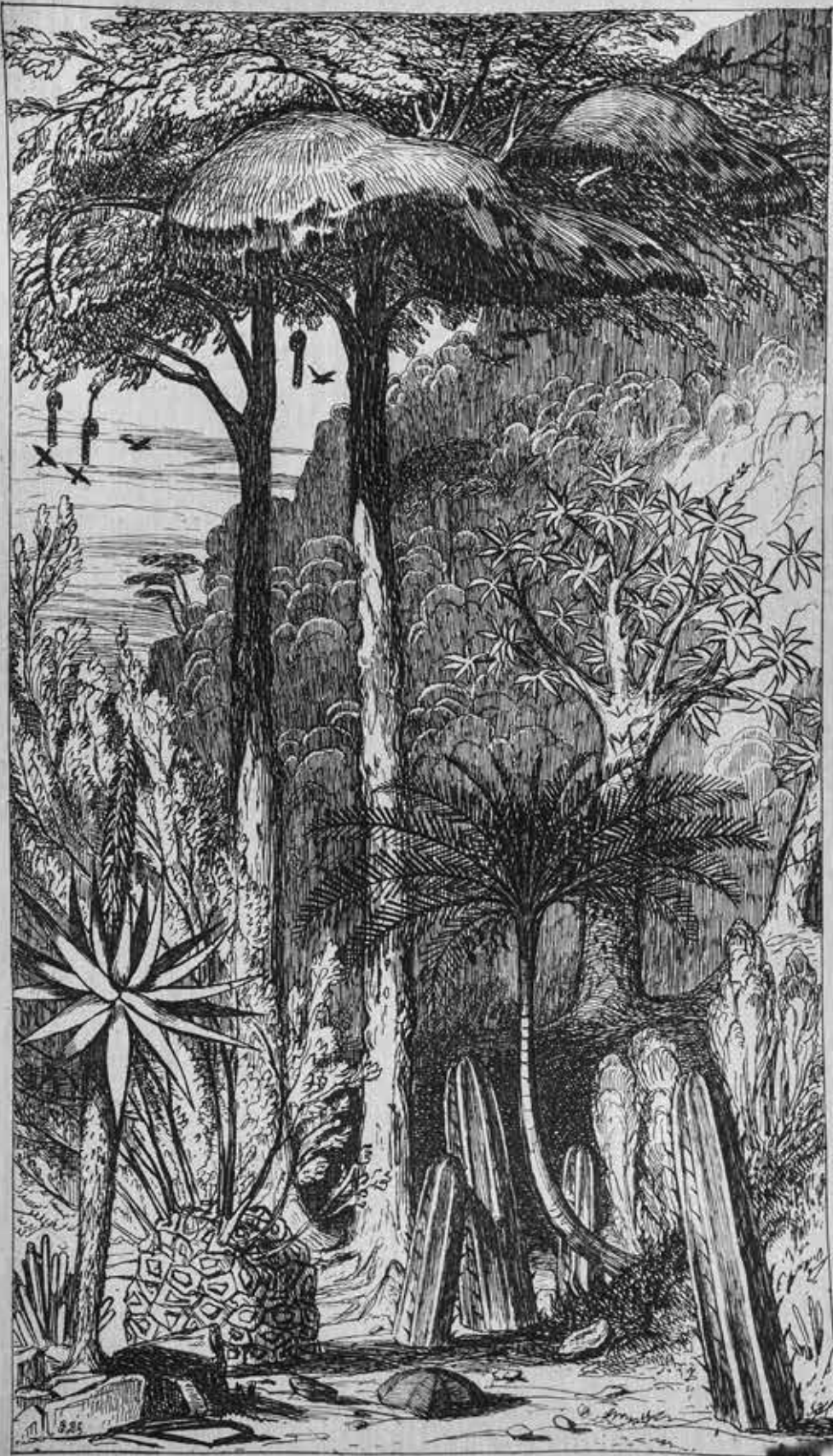
SNAKE CUSHION  
EMBROIDERY

90cm x 60cm

35.4" x 23.6"

Available in all our dye colours.



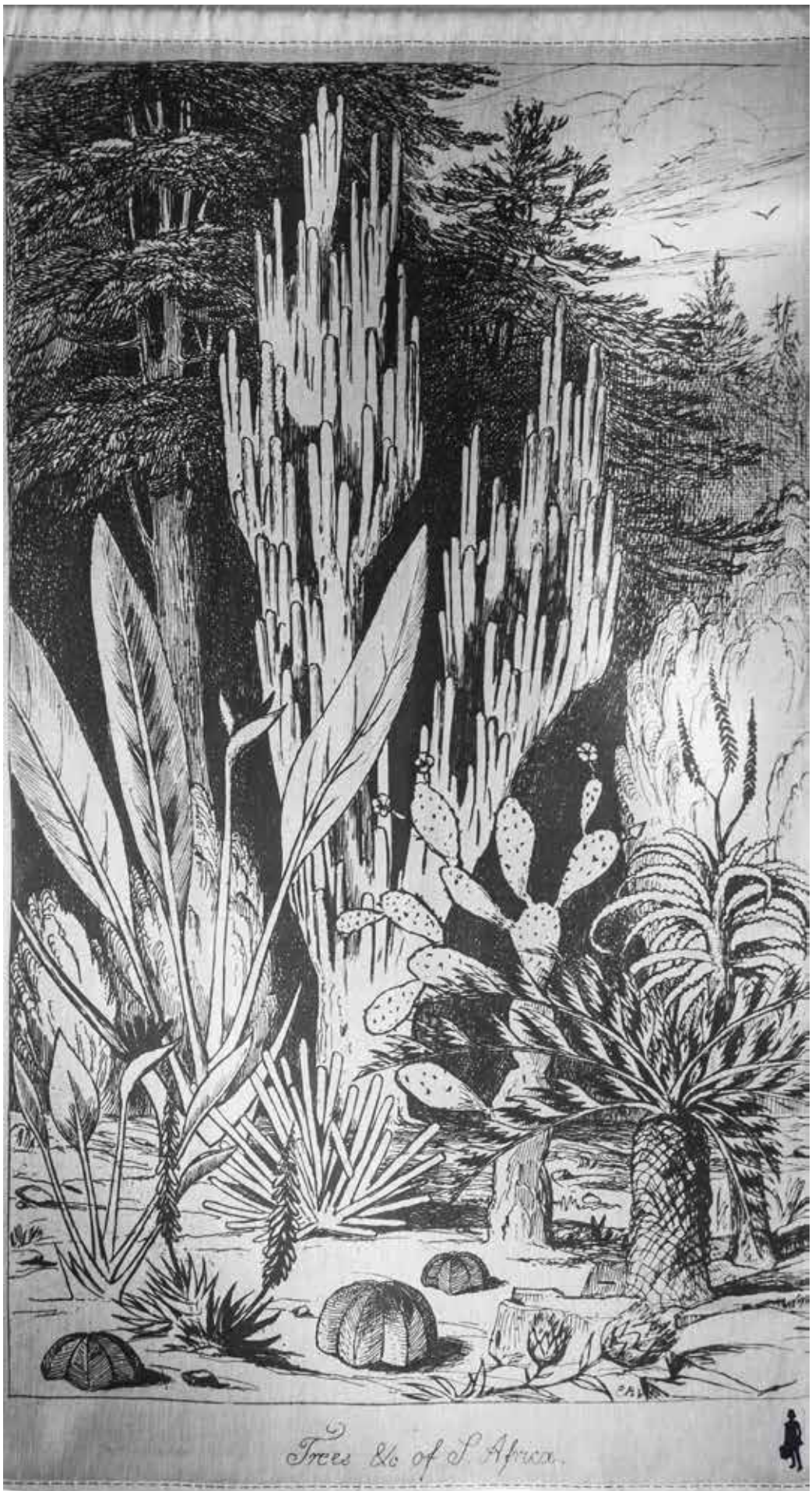


*Trees &c. of S. Africa.*



TREES OF SA I

220cm x 150cm  
86.6" x 59"



*Trees &c of S. Africa.*

TREES OF SA II

220cm x 150cm  
86.6" x 59"



FLAMINGO PANEL

220cm x 150cm  
86.6" x 59"



HIPPO PANEL

220cm x 150cm  
86.6" x 59"





## Field Notes and Veld Finds

Centuries ago the !xam and other San communities were the first to collect and use plants for medicinal and ritual purposes. They depicted the invaluable flora on rock, as it was the only medium they had to their disposal. It was only during the 17th century that Western artists and collector-explorers arrived to study and record these plants. South Africa's fauna was captured on paper by a variety of artists, but it was specifically the plant-curious Dutch who accurately captured the beauty of our country's rich variety of botanicals.



GIBAEUM

60: 60cm x 60cm

60: 23.6" x 23.6"



GLOTTE

60: 60cm x 60cm

60: 23.6" x 23.6"



PERIGRENTA

60: 60cm x 60cm

60: 23.6" x 23.6"

TWIG  
60: 60cm x 60cm  
60: 23.6" x 23.6"



GLABRA EMBROIDERY

72cm x 44cm

28.3" x 17.32"



## Swerving Savannahs

Herewith we honour the grasslands of Southern Africa, all 847 indigenous species. This humble plant family is greatly overlooked and threatened due to development. Alan Paton describes in his book *Cry Our Beloved Country* (1948)

“The grass is rich and matted, you cannot see the soil. It holds the rain and the mist, and they seep into the ground, feeding the streams in every kloof. It is well-tended, and not too many cattle feed upon it; not too many fires burn it, laying bare the soil. stand upon it, for the ground is holy, being even as it came from the Creator. Keep it, guard it, care for it, for it keeps men, guards men, cares for men. Destroy it and man is destroyed.”

We therefore have to protect and promote the importance of this precious resource.



### BOSCHKLOOF CUSHION

60: 60cm x 60cm

60: 23.6" x 23.6"



### MOSTERDHOEK CUSHION

60: 60cm x 60cm

60: 23.6" x 23.6"

## RUBBER APPLIQUE

72cm x 44cm

28.3" x 17.32"

Available in all our dye colours.



## DENIM GRASSES EMBROIDERY

72cm x 44cm

28.3" x 17.32"





*In the left house of the Bosch Kloof - 1874*

BOSCHKLOOF PANEL

220cm x 150cm  
86.6" x 59"



*in Van-Hoek-Block - 174*

MOSTERD HOEK PANEL

220cm x 150cm  
86.6" x 59"





GREEN WATERCOLOUR THROW

300cm x 140cm  
118.11" x 55.12"



CHARCOAL WATERCOLOUR THROW

300cm x 140cm  
118.11" x 55.12"



OKAVANGO THROW

300cm x 140cm  
118.11" x 55.12"



STRIPE EMBROIDERED THROW  
Stone or Charcoal Embroidery

300cm x 150cm

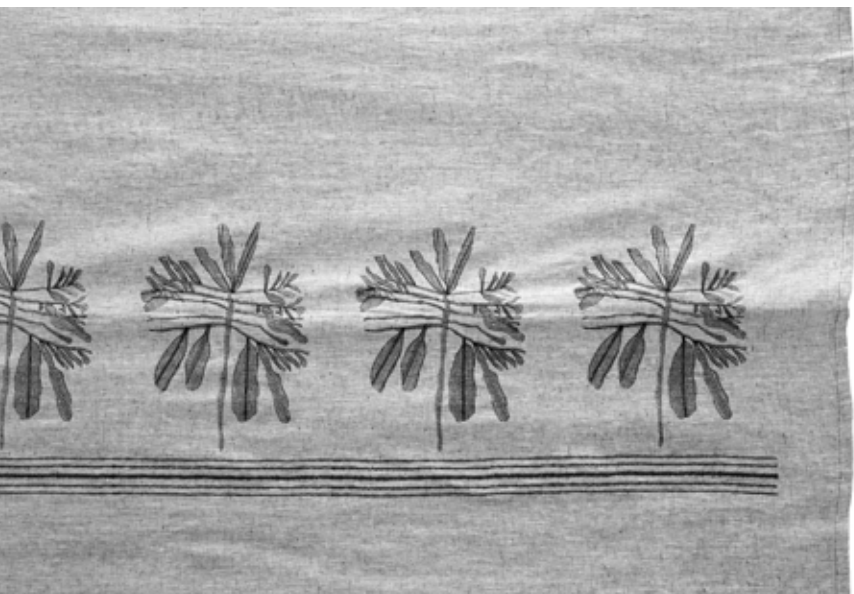
118.1" x 59"



LEAF EMBROIDERED THROW  
Stone or Charcoal Embroidery

300cm x 150cm

118.1" x 59"



BLACK & WHITE LEAF EMBROIDERED  
THROW

300cm x 150cm

118.1" x 59"

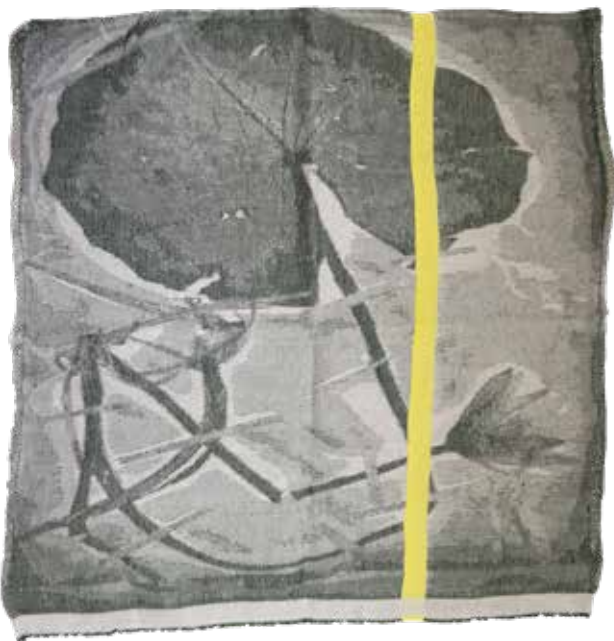




MOPIPI GUEST TOWEL

51cm x 60cm

20" x 23.6"



THAMALAKANE GUEST  
TOWEL

51cm x 60cm

20" x 23.6"



TABLE MOUNTAIN GUEST  
TOWEL

51cm x 60cm

20" x 23.6"

NITIPHYLLUM GUEST TOW-  
EL

51cm x 60cm

20" x 23.6"



NEMASTOMA GUEST  
TOWEL

51cm x 60cm

20" x 23.6"



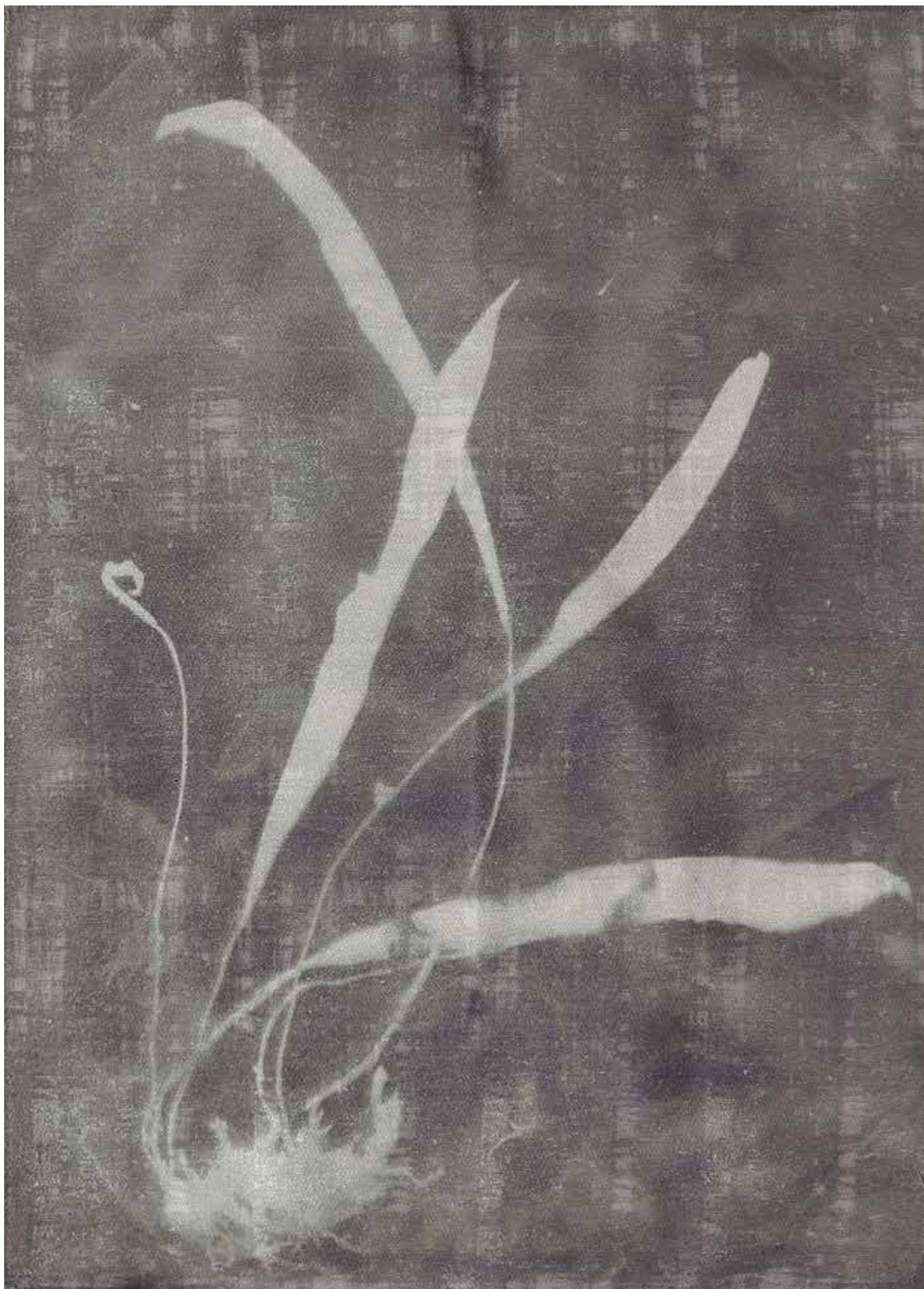
LIONS HEAD GUEST TOW-  
EL

51cm x 60cm

20" x 23.6"

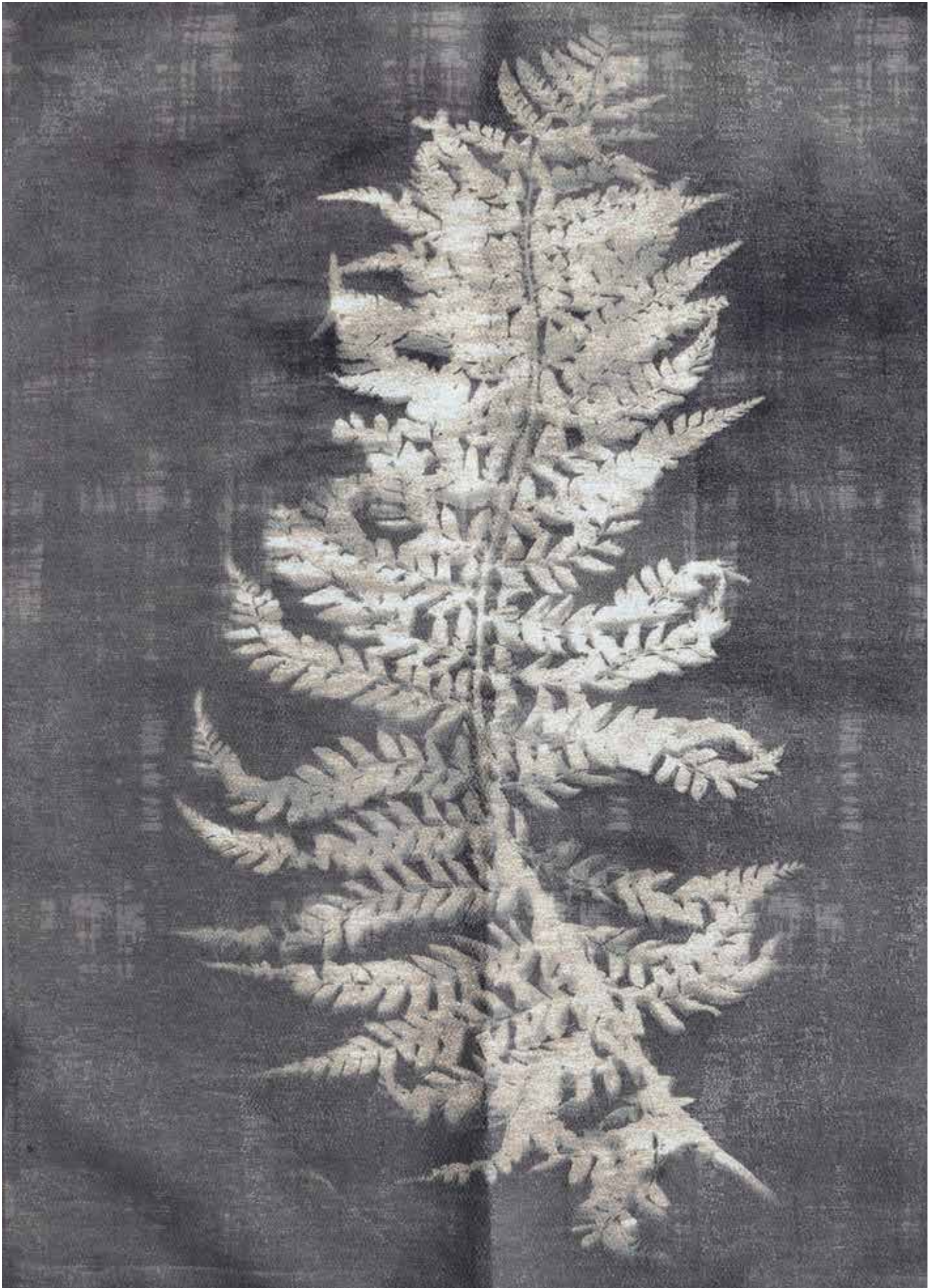






ELAPHOGLOSSUM CARPET

230cm x 160cm  
90.6" x 63"



POLYSTICHUM CARPET

230cm x 160cm  
90.6" x 63"

## EXPORT TERMS AND CONDITIONS

Please note that the selling of Evolution's products are subject to these terms and conditions. Please take a few minutes to review them. These terms and conditions may change.

## MINIMUM ORDERS

Please refer to pricelist for applicable minimum orders. Minimums for exclusivity for a particular design in a particular region can be discussed, depending on the size of the region.

## DELIVERY OPTIONS

If Evolution is to send the goods, DHL or FedEx will be used for international shipments, and The Courier Guy for local. If the customer is collecting from Evolution Head office in Johannesburg, Evolution will not take responsibility for the consignment once it is in the possession of the shipping company. If any special packaging is required this must be communicated upfront to ensure all parties are informed. Special packaging will be quoted for separately. Custom fees will be for the client's account.

## CARE INSTRUCTIONS

### Pigment Printed Items

All of the products must be dry cleaned to ensure an optimal lifespan. Avoid direct sunlight.

#### Dry cleaners to be instructed to use:

Dry clean with hydrocarbon solvent only (HCS).

WARNING: Pigment printing may fade over time.

Evolution takes the utmost care to create consistent colours in printing and dying. However, due to the handmade nature and the natural fabrics used, the colours may vary slightly from one production run to the next. The 'handle' of the items might vary too, subject to the pigment used and the finish required to set/fix/cure the prints.

Please note that shrinkage will occur if products are washed. Evolution will not be held liable for any damage that may occur during cleaning, if not done in accordance with the wash care instruction.

### Hand Dyed Items

All the dyed components are done by hand. Dye batches may differ and no two products' end result will be exactly the same.

Care must be taken when these items are wet as the color residue might rub onto other objects.

Avoid direct sunlight, items may lose colour with heavy exposure.

All dyed items must be dry cleaned only with attached care label instruction.

Dry clean with hydrocarbon solvent only (HCS).

## QUALITY ASSURANCE

Care is taken to ensure that the quality is of international standard. Non-toxic printing and dyeing techniques and fabrics from ISO 9000 adherent companies are used.

Pigmented printed items are sensitive to direct sunlight. All cushions are made from 100% linen. Due to the natural nature of the fabrics there might be variances in colour on prints. See care instructions previously mentioned.

All weights and volumes are approximates, due to the nature of the fabrics used.

Evolution must be informed if there are any problems with a product within 7 days of receiving the item. The aim will be to resolve these concerns within 14 days and replace or refund the client once the original item has been returned.

## LEAD TIMES

Evolution aims to keep some units of the assortment in stock but cannot always guarantee that every item will be readily available. Please allow approximately 12 weeks for production on orders (depending on size of order and products ordered). If April and December falls into the timeline we may require an extra 4 weeks. On receipt of a purchase order, contact will be made within 2 working days to confirm the order and lead-time.

## PRICE

Prices will be given on inquiry date. These prices may vary on order date if the order is not placed soon after making the inquiry. Factors that might influence the price include exchange rate fluctuations, fabric price increases and labor cost adjustments. Every 6 months prices will be reviewed to balance possible fluctuations.

## PACKAGING

The items will be wrapped in brown paper and a box only to reduce plastic usage.

Client to send L&P instructions, within 2 weeks of order dispatch date. Any delay could affect your delivery

## PAYMENT TERMS

Production will only be started when the full payment has been received.

The preferred method of payment is Payfast, a link will be sent to pay via credit card.

If a bank transfer is done, all payment confirmations must be sent to

**info@evolutionproduct.co.za**. Evolution will not be responsible for bank transfer fees.

Delays in confirming orders may extend lead times. Delay in commitment may result in increased prices, for reasons mentioned previously.

## DELIVERY TIMES

The normal delivery periods is +/-12 weeks

In view of the volatility of raw material prices, repeat order prices will need to be reconfirmed (Which will be maintained as far as possible) before order placement.

## DESIGN RIGHTS

Evolution has the sole rights to the designs of all its products and should not be copied in any form whatsoever.

Evolution does not issue automatic exclusivity on any designs.

## EMPLOYMENT PRACTICES

Our factories have bargaining council certificates and we are compliant with South African Labor laws.

**evolution**  
**PRODUCT**